

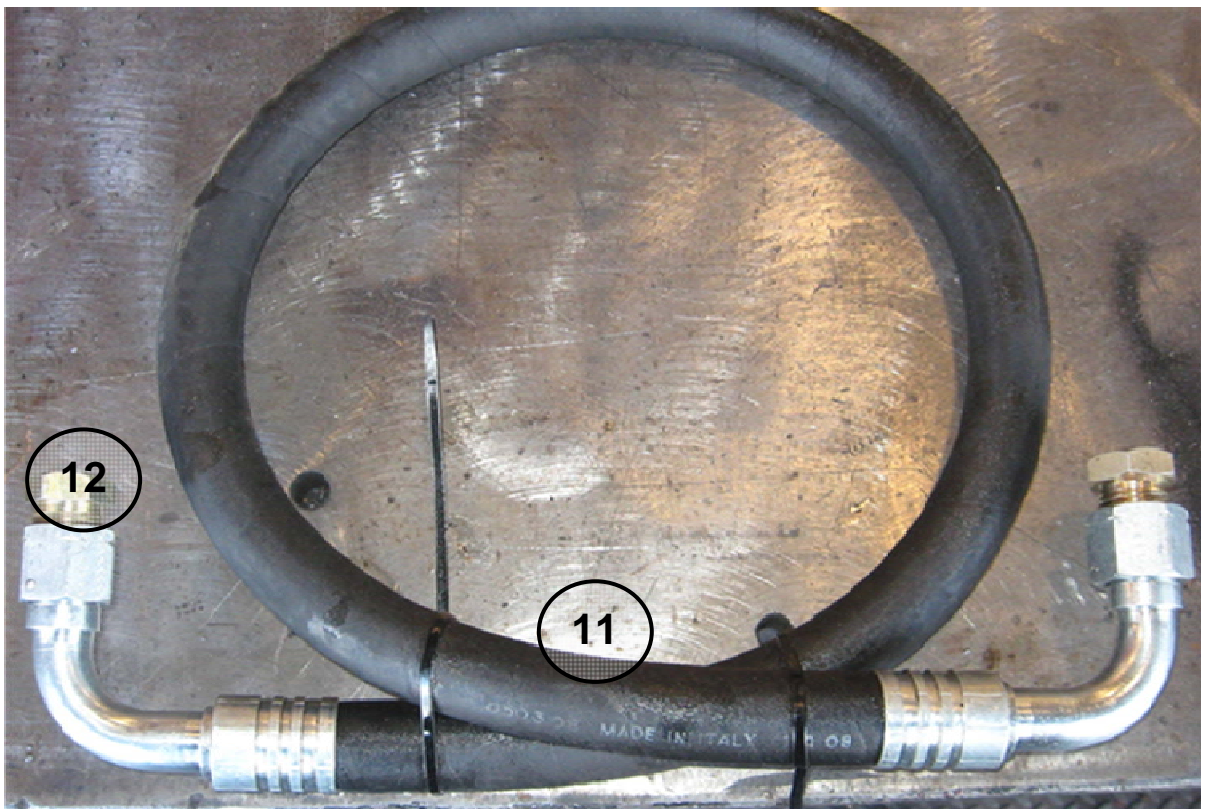
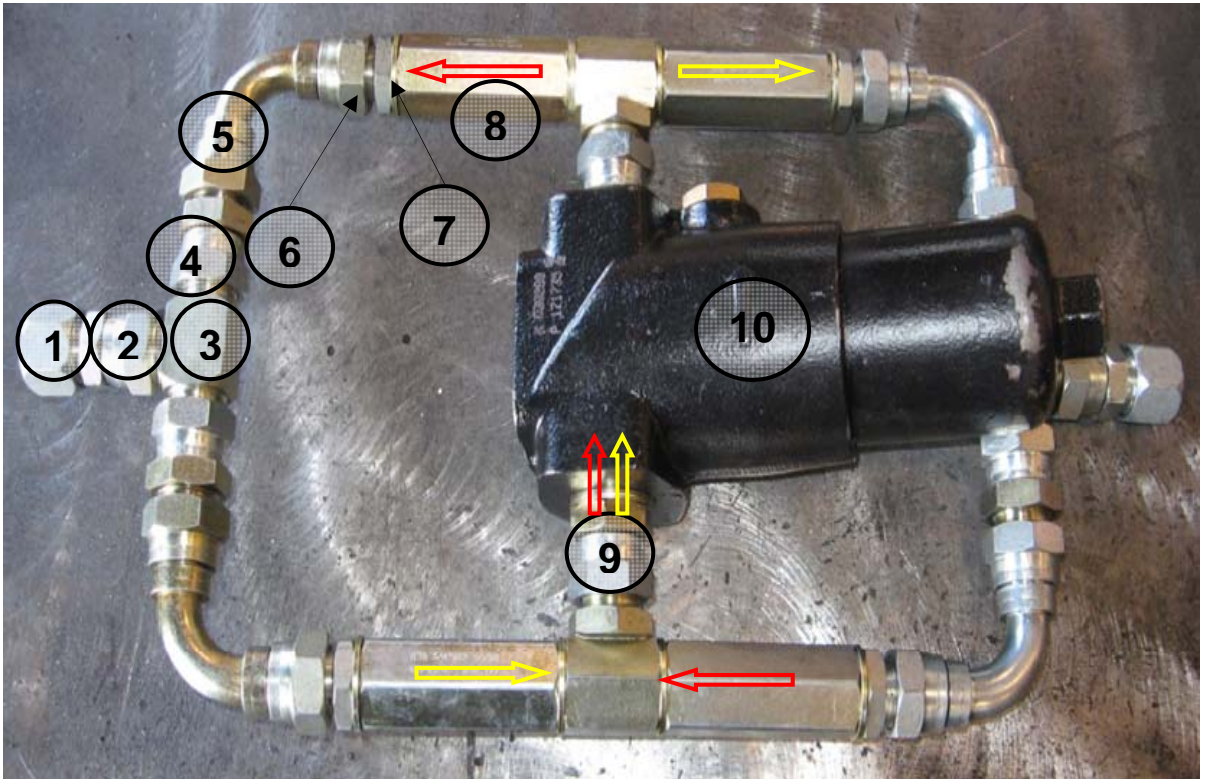
## DRAFT SERVICE MEMO 2010.0017

**Date:** 2/2/2010  
**Subject:** High Pressure Flushing System M500.055.1651  
**Machines:** All when servicing the hydrostatic system

It has come to our attention that many times the hydraulic flushing kits have been returned missing parts. This makes the flushing kit useless to the next person who tries to use it.

Please use this document as a guide to replace missing parts and invoice the last user of the flushing kit for the parts required.

Item	Qty	P/N	Description	Price
1	2	M074.999.0012	#12 JIC steel cap	
2	2	M250121	#12 Female BSPP swivel - #12 JIC male	
3	4	250790	M-M-M Tee fitting BSPP	
4	4	250120	F-M adaptor	
5	4	250850	90° swept bend, swivel F-swivel F	
6	4	250420	M-M adaptor	
7	10	M519.055.0065	Bond seal	
8	4	M500.055.1664	Check valve	
9	2	M250120	BSPP M – swivel F	
10	1	M260425	Current flushing system filter (P171753)– 1 1/16” opening, 4 13/16” tall	
10	1	M500.999.0091	Old flushing system filter (P169447) – 15/16” opening, 4 9/16” tall	
11	1	M253027	High pressure hose	
12	2	M530.055.0188	#12 JIC steel plug	



For further information please contact  
Moffett Service Support USA  
[us.moffett.service@cargotec.com](mailto:us.moffett.service@cargotec.com)